

THE ARMY- NAVY GAME



MAY 29, 1922
WORDEN FIELD.

COURTESY :: SERVICE :: STRENGTH

The
Annapolis Banking & Trust
Company

Cor. MAIN ST. and CHURCH CIRCLE

Capital, Surplus and Profits, . . . \$ 170,000.00
Resources nearly \$2,000,000.00

A Depository of Moneys of the State
of Maryland.

A Depository of Moneys of the Coun-
ty of Anne Arundel.

A Depository of Moneys of the City
of Annapolis.

Your Accounts Solicited, Appreciated and Protected
Four Per Cent Interest Paid on Savings Accounts

Army-Navy
**BASEBALL
GAME**



WORDEN FIELD, U. S. N. A.

29 May, 1922

WM. H. HORSTMANN CO.



PHILADELPHIA

SUPERIOR
QUALITIES
OUTFITS
FOR BOTH
ARMY and NAVY



NEW YORK

ANNAPOLIS

Spalding Athletic Equipment

There is no substitute for
Spalding Quality.

To be properly equipped
is as satisfying as to be
well dressed.

A. J. Spalding & Bros

126 Nassau St.

NEW YORK
And All Large Cities

523 Fifth Ave.



Catalogue on
Request

FRANK THOMAS COMPANY, Inc.

NORFOLK, VA. :: ANNAPOLIS, MD.

WHITE UNIFORMS
O. B. COTTON UNIFORMS



Known throughout the Service as Makers of the best
"Whites" made in the States.



THE best of
everything to
Eat.

63 MARYLAND AVENUE

...THE..

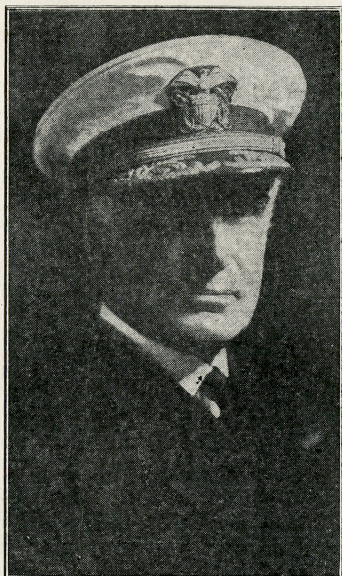
WM. H. BELLIS
CO.

NAVAL UNIFORMS
AND
CIVILIAN DRESS

CIVILIAN DRESS FOR
SEPTEMBER LEAVE

Special Price List to Graduating
Class

216 MAIN ST., ANNAPOLIS
(Opposite Hotel Maryland)



Admiral
HENRY B. WILSON, U. S. N.

Superintendent
U. S. N. A.

Brig.-General
DOUGLAS Mac ARTHUR
U. S. A.,

Superintendent
U. S. M. A.



Record of Army-Navy Games

BASEBALL

Year	Army	Navy	Year	Army	Navy
1901.....	4.....	3	1912.....	8.....	7
1902.....	3.....	5	1913.....	2.....	1
1903.....	No Game		1914.....	8.....	2
1904.....	8.....	2	1915.....	6.....	5
1905.....	5.....	9	1916.....	13.....	3
1906.....	8.....	5	1917.....	No Game	
1907.....	6.....	5	1918.....	No Game	
1908.....	5.....	16	1919.....	6.....	10
1909.....	7.....	3	1920.....	1.....	11
1910.....	2.....	0	1921.....	7.....	6
1911.....	7.....	1			

FOOTBALL

Year	Army	Navy	Year	Army	Navy
1890.....	0.....	24	1906.....	0.....	10
1891.....	32.....	16	1907.....	0.....	6
1892.....	4.....	12	1908.....	6.....	4
1893.....	4.....	6	1909.....	No Game	
1894.....	No Game		1910.....	0.....	3
1895.....	No Game		1911.....	0.....	3
1896.....	No Game		1912.....	0.....	6
1897.....	No Game		1913.....	22.....	9
1898.....	No Game		1914.....	20.....	0
1899.....	17.....	5	1915.....	14.....	0
1900.....	7.....	11	1916.....	15.....	7
1901.....	11.....	5	1917.....	No Game	
1902.....	22.....	8	1918.....	No Game	
1903.....	40.....	5	1919.....	0.....	6
1904.....	11.....	0	1920.....	0.....	7
1905.....	6.....	6	1921.....	0.....	7

BASKETBALL

Year	Army	Navy
1920.....	18.....	24
1921.....	29.....	45
1922.....	25.....	21



ARMY TEAM

Standing (left to right) John B. Lobert, Coach; Mr. Downing, Assistant Manager; Bryant, p; Lancaster, sub; Post, 1st b; Burns, ss; Goodman, p; Smith, G. J., p; Reeder, 1st b; Sarcka, p; Mr. Kastner, Manager.

Sitting (left to right) Smythe, cf; Bonnett, c; Stevenson, rf; Cragin, p; Roeper, p; Willhide, 2nd b; Don Stork, 3rd b; French, lf; Dasher, ss; Woods, c.



Captain GLEN C. WILHIDE

Cadet, U. S. M. A.

JOHN B. LOBERT

Head Coach





NAVY TEAM

Top Row: Coach Wilson, Manager Jarrett, Coach Lush, Commander Cook, Coach Milner, Coach Blakeslee.
 Middle Row: Newton, Fenno, York, Cooper, Thach, Petersen, Zimmerman, Nutter, Waid, McKee, Doc Snyder.
 Bottom Row: Kelly, Durgin, Mills, Niemyer, Hederman, Capt. Humphreys, Hogan, Barchet, Baker, Harris, Rawlings.



Manager H. B. JARRETT

Midshipman
U. S. N. A.

Captain C. O. HUMPHRIES

Midshipman
U. S. N. A.



NAME	ARMY SCORE CARD											AB	H	R	PO	A	E
	1	2	3	4	5	6	7	8	9	10	11						
Smythe, cf																	
Wilhide, Capt., 2b																	
French. lf																	
Storck, 3b																	
Reeder, 1b																	
Dasher, ss																	
Post, rf																	
Wood } Bonnett } c																	
Total																	

Pitchers : Cragin, Sarcka, Roper, Goodman, Miller.

NAME	NAVY SCORE CARD											AB	H	R	PO	A	E
	1	2	3	4	5	6	7	8	9	10	11						
Harris, cf																	
Rawlings, lf																	
Mills, { Barchet, } 2b																	
Hederman, ss																	
Niemyer, rf																	
Durgin, 1b																	
Baker, 3b																	
Hogan, c																	
Kelly, p																	
Total																	
Substitutes																	

Scheule, Peppler & Kostens

62 MARYLAND AVE.

Uniforms, Equipments

AND

Cits Clothes

Don't forget to take home a copy of the June Log--the biggest, best, snappiest, and most recent exponent of a Midshipman's idea of humor. It's out today--you can't afford to be without one.

PIETRANGELO'S

Naval Uniforms

27 MARYLAND AVENUE

Scheule, Peppler & Kostens

62 MARYLAND AVE.

Uniforms, Equipments

AND

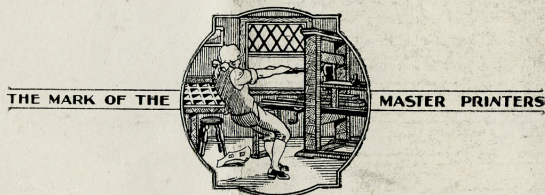
Cits Clothes

Don't forget to take home a copy of the June Log--the biggest, best, snappiest, and most recent exponent of a Midshipman's idea of humor. It's out today--you can't afford to be without one.

PIETRANGELO'S

Naval Uniforms

27 MARYLAND AVENUE



Art Press

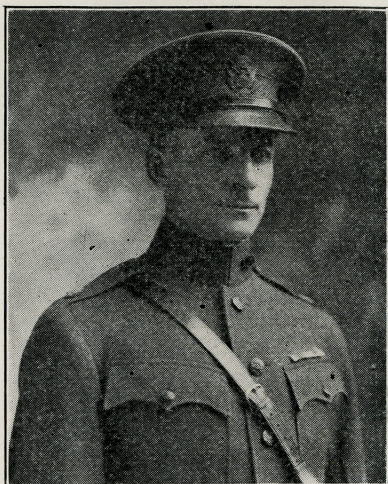
WHERE THE BETTER CLASS PRINTING IS PRODUCED
ART PRESS BUILDING - SOUTH STREET
ANNAPOLIS, MD.

A Service for Both Branches of "The Service"

Class Rings, Pins and Stationery, Prize Cups
and Trophies of Precious Metals, Watches,
Clocks, Articles of Silver and Fine Leather for
Gifts and Personal Use.

Nearly a Century of Specialization

J. E. CALDWELL & CO.
PHILADELPHIA



Major A. D. Surles,
U. S. A.
Baseball Representative

Army and Navy Records This Season

NAVY RECORD.

	<i>Navy</i>	<i>Opp.</i>		<i>Navy</i>	<i>Opp.</i>
Bowdoin.....	7	6	Carnegie Tech.....	8	2
Maryland State.....	7	4	W. Va. University..	9	2
Dartmouth.....	10	2	William & Mary.....	10	7
Cornell.....	4	5	U. of P. (at Penn)..	3	8
Holy Cross.....	2	5	Johns Hopkins.....	3	1
Syracuse.....	3	2	Swarthmore.....	7	6
Penn. State.....		Rain	Catholic University..	12	4
Delaware.....	13	4	Gettysburg.....	0	7
Georgia Tech.....	1	13			

ARMY RECORD

	<i>Army</i>	<i>Opp.</i>		<i>Army</i>	<i>Opp.</i>
Vermont.....	5	4	Catholic University..	4	0
C. C. N. Y.....	11	2	Williams.....	12	2
N. Y. University....	5	4	Lafayette.....	4	7
Tufts.....	8	3	Swarthmore.....	5	7

Army Managers

Owing to a mistake of the engravers, the picture of the Army Managers was made up to the wrong size and it was impossible to have another cut made in the short time remaining. We wish to apologise to the Cadets for this error, and take this chance of so doing.

HEADQUARTERS

...FOR...

**SOUVENIR POST
CARDS**

Eastman Kodaks & Supplies
Developing and Printing

**Chas. G. Feldmeyer
NEWSDEALER**

Books, Stationery, Tobacco, Cigars
Pennants, Pillow Covers

56 MARYLAND AVE.

Telephone 627-J

**Queen
Anne's
Cupboard..**

SWEETS

**SALADS, CAKES
SANDWICHES
ICES**

Home made Cakes Fresh Daily
Foss Chocolates

24 STATE CIRCLE

NAVY SONGS

ANCHOR'S AWEIGH

Get under way, Navy,
Decks cleared for the fray
We'll hoist true Navy Blue
So Army down your Grey-y-y-y
Full speed ahead, Navy,
Army heave to,
Furl Black and Grey and Gold
And hoist the Navy,
Hoist the Navy Blue!

Stand Navy down the field
Sail set to the sky
We'll never change our course
So Army you steer shy-y-y-y.
Roll up the score, Navy,
Anchor's Aweigh,
Sail Navy down the field
And sink the Army,
Sink the Army Grey.

BENNY HAVENS, OH!

Come, fill your glasses, fellows, and stand up in a row,
To singing sentimentally we're going for to go;
In the army there's sobriety, promotion's very slow,
So we'll sing our reminiscences of Benny Havens, Oh!

CHORUS:

Oh! Benny Havens, Oh! Oh! Benny Havens, Oh!
We'll sing our reminiscences of Benny Havens, Oh!

When you and I and Benny, and all the others, too,
Are called before the "final board" our course in life to view,
May we never "fess" on any point, but straight be told to go,
And join the army of the blest at Benny Havene, Oh!

CHORUS:

BAILEY BANKS & BIDDLE CO.
JEWELERS SILVERSMITHS STATIONERS
Philadelphia

Graduation Gifts

In the various departments will be found many articles appropriate for this important Gift.

In Gold, Silver and Leather are many appreciated articles --- including Vanity Cases, Puff Boxes, Pen and Pencil Sets, Cigarette Cases, Cuff Links, Cigarette Holders, Week-end Cases, Wallets, Game Sets, Suit Cases, Bags and Toilet Rolls, etc.

WEDDING AND OTHER GIFTS

may be selected from the

GIFT BOOK

which will be mailed upon request

ANNAPOLIS BRANCH:
Maryland Avenue
and State Circle.

Suggestions to Scorers

Give a base hit on a ball too hard to handle.

In matters of doubt favor the batsman.

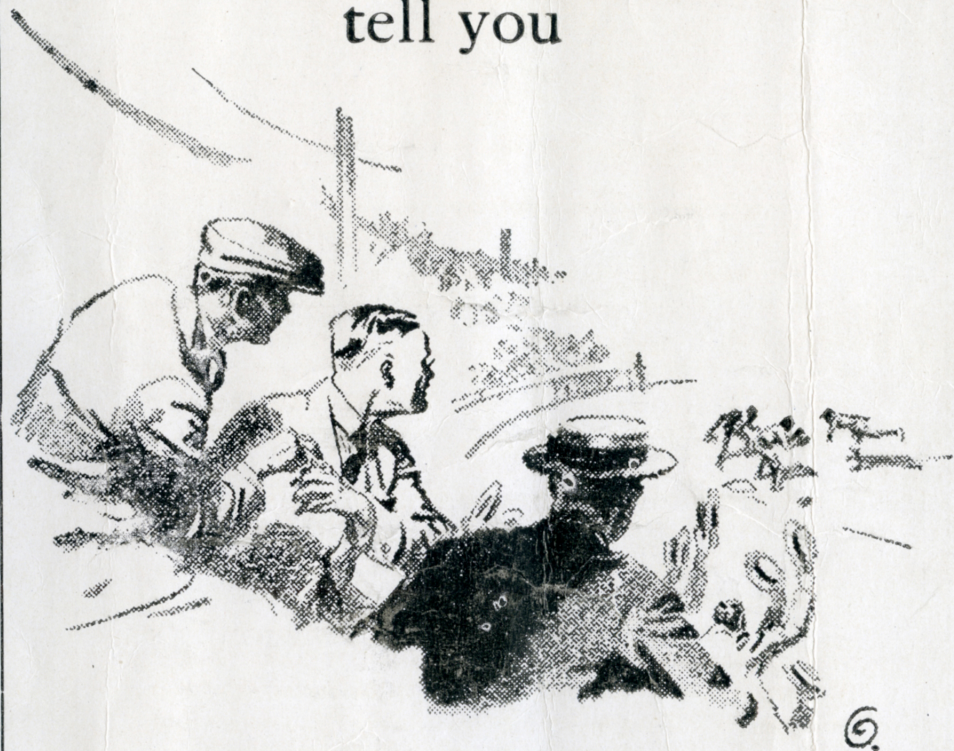
Begin scoring in lower right hand corner and follow in order of bases. Indicate a hit by a cross in as many squares as it went for bases. Place a dot to left, right or over cross to show the direction of hit. If base was not reached by hit, or out was made, indicate this in the same square.

If runner is put out at second, indicate how in the second square. If he is advanced by hit or error, place number of hitter in second square.

Number the players: Pitcher, 1; Catcher, 2; Basemen, 3, 4, 5; Shortstop, 6; Fielders, beginning with left, 7, 8, 9. Record in lower right corner base on fumble of shortstop, \wedge -6; on passed grounder, v-6; on muffed fly, o-6; on muffed foul fly, \equiv -6; on muffed thrown ball, (3; on wild throw, w-6; on missed third strike, \times ; on balls, b; hit by pitched ball; p; on force out, xx; on successful attempt to force, x.

An out, on fly caught by left fielder, f.7; on assist, third baseman to first, 5-3; on strikes, k; on foul fly caught by catcher, L-2; foul tip, T-2; out at second by left fielder unassisted, 7-B. Letter bases A-B-C and H.

Let Fatima smokers
tell you



FATIMA

CIGARETTES

*Always slightly higher in price than
other Turkish Blend cigarettes but—
just taste the difference!*

LIGGETT & MYERS TOBACCO Co.

C&D
ChevronsandDiamonds.org

WELCH :: Tailor

“Cits”

EVENTUALLY

WELCH, Tailor

CARR, MEARS & DAWSON

White Uniforms Best Grade

Blue Uniforms Best Grade

Equipments Best Grade

Haberdashery Best Grade

QUALITY

FIT

SERVICE

WELCH, Tailor :: Representative

ART PRESS, ANNAPOLIS

C&D
ChevransandDiamonds.org